

December 2017		View:	January	2018	February 2018
Date	Hi/Lo	Pi	Snow	Forecast	Avg. HI / LO
Mon 1/1	21°/5°	0	0 IN		48°/28°
Tue 1/2	22°/7°	0 IN	0 IN		48°/28°
Wed 1/3	42°/14°	0 IN	0 IN		48°/27°
Thu 1/4	45°/19°	0 IN	0 IN		48°/27°
Fri 1/5	56°/22°	0 IN	0 IN		48°/27°
Sat 1/6	58°/24°	0 IN	0 IN		48°/27°

Norman January Weather 2018 - AccuWeather Forecast for OK /3069

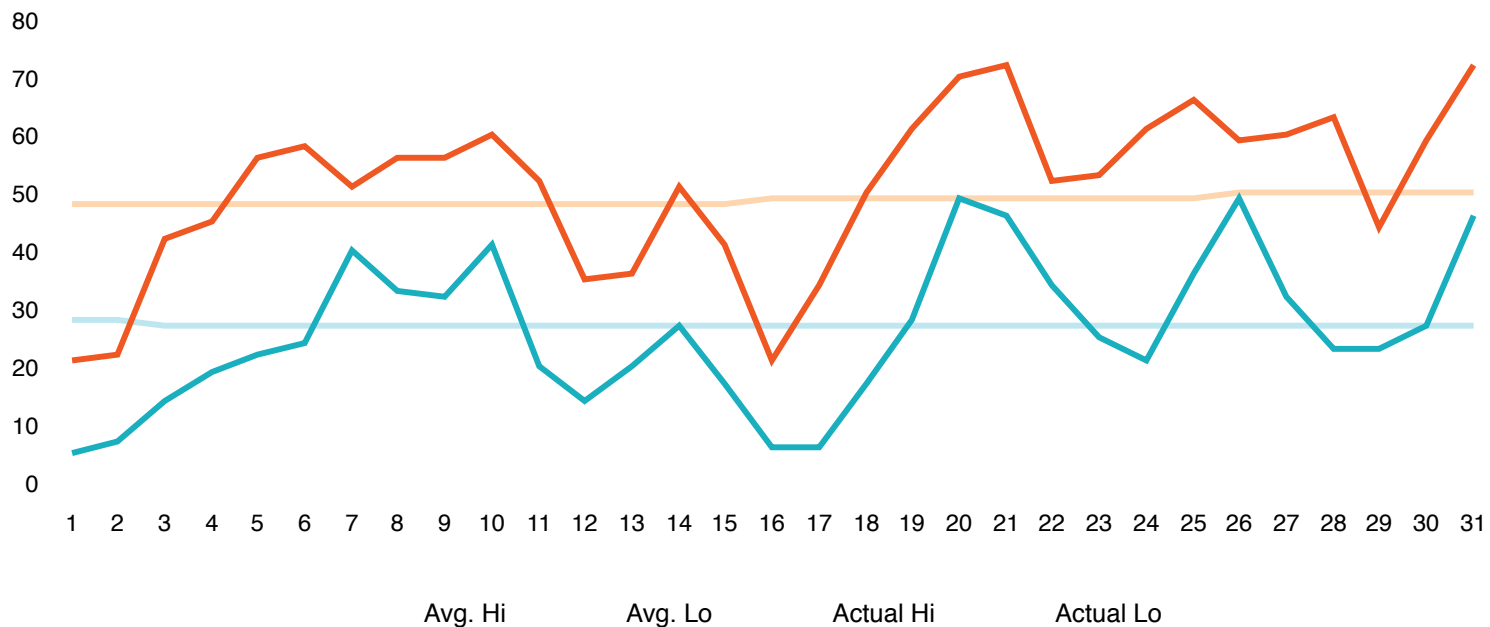
Date	Hi/Lo	Precip	Snow	Forecast	Avg. HI / LO
Sun 1/7	51°/40°	0.13 IN	0 IN		48°/27°
Mon 1/8	56°/33°	0 IN	0 IN		48°/27°
Tue 1/9	56°/32°	0 IN	0 IN		48°/27°
Wed 1/10	60°/41°	0 IN	0 IN		48°/27°
Thu 1/11	52°/20°	0 IN	0 IN		48°/27°
Fri 1/12	35°/14°	0 IN	0 IN		48°/27°
Sat 1/13	36°/20°	0 IN	0 IN		48°/27°
Sun 1/14	51°/27°	0 IN	0 IN		48°/27°
Mon 1/15	41°/17°	0	0 IN		48°/27°
Tue 1/16	21°/6°	0	0 IN		49°/27°
Wed 1/17	34°/6°	0 IN	0 IN		49°/27°
Thu 1/18	50°/17°	0 IN	0 IN		49°/27°
Fri 1/19	61°/28°	0 IN	0 IN		49°/27°
Sat 1/20	70°/49°	0 IN	0 IN		49°/27°
Sun 1/21	72°/46°	0 IN	0 IN		49°/27°

Date	Hi/Lo	Precip	Snow	Forecast	Avg. HI / LO
Mon 1/22	52°/34°	0 IN	0 IN		49°/27°
Tue 1/23	53°/25°	0 IN	0 IN		49°/27°
Wed 1/24	61°/21°	0 IN	0 IN		49°/27°
Thu 1/25	66°/36°	0 IN	0 IN		49°/27°
Fri 1/26	59°/49°	0 IN	0 IN		50°/27°
Sat 1/27	60°/32°	0 IN	0 IN		50°/27°
Sun 1/28	63°/23°	0 IN	0 IN		50°/27°
Mon 1/29	44°/23°	0 IN	0 IN		50°/27°
Tue 1/30	59°/27°	0	0 IN		50°/27°
Wed 1/31	72°/46°	0	0 IN		50°/27°

[December 2017](#)

[February 2018](#)

Temperature Graph January 2018



	Actual	Nc	Departure	Record
High	51°	49		N/A° (N/A)
Low	26°	27		N/A° (N/A)
Average	38°	38°	0°	
Precip	0.13 in	1.55 in	-1.42 in	
Snow	0 in			

The Weather Station for Smartphone